

Brief Introduction of ZX100 Series IP PBX

ZX100 Series of IP PBX is not only the full feature phone system, but also a professional router device. The all-in-one ZX100 IP PBX can not only provide the traditional basic PBX features(call hold, call forwarding, call waiting and so on) as well as enhanced features such as recording server, voice mail server, conference server, etc. In addition, ZX100 IP PBX supports powerful network management, such as NAT map, router, VPN, Firewall, DDNS, etc.



ZX100-A16



ZX100-A16



ZX100-E1



ZX100-E1

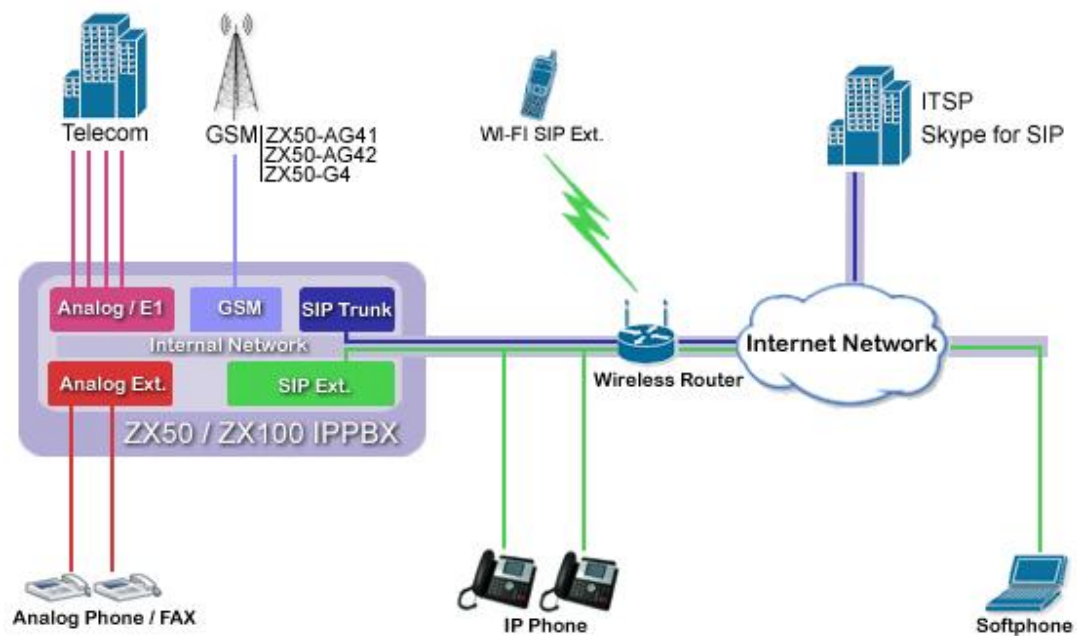
ZYCOO ZX100 Series IPPBX product lines include ZX100-A16, ZX100-E1, which has different interface in follow table.

	Model	FXS	FXO	E1
ZX100-A16	A16016	0	16	0
	A16214	2	14	0
	A16412	4	12	0
	A16610	6	10	0
	A16808	8	8	0
ZX100-E1	E1	0	0	1

Key Features	80 Concurrent calls Up to 1000 registers Recording Full Feature IP PBX Video Calls Multiple Language(English/French/Chinese) DID(Direct Inward Dialing Number) Support SKYPE for SIP Call Monitoring
Basic Features	Codec: G.711-Ulaw,G.711-Alaw,G.726,G.729,GSM,SPEEX,H.261,H.263,H.263+,H.264 Call Hold / Forward / Transfer / Waiting / Parking Call Paging and Intercom Caller ID Music On Hold DISA(Direct Inward System Access) Flexible Dial Plan Ring Group Conference Room Call Logs BLF(Busy Lamp Field) Configuration By web Built-in SIP/IAX2 server Build-in voice mail server System Backup and Restore Echo Cancelation/VAD Support Static/DHCP/PPPOE VPN Client(Support N2N) DDNS Client(Support Dyndns.org) Support NTP(Network Time Protocol)
Interface	1 AC (110V~200V input) 1 WAN ports (10/100M) 1 Lan ports (10/100M) 16 RJ11 (FXS/FXO) -- Model: ZX100-A16 1 PRI -- Model:ZX100-E1
Hardware	CPU: ATOM N270, 1.6 GHz x86 CPU RAM: 2 GB DDR2 RAM Storage: 320 mobile hard disk drive PSU: 300W Power Supply with industry standard Dimensions: W: 465 mm, H: 44.5 mm , D: 370 mm Rack mountable: Comes with accessories Weight: 7.0Kg
Environmental requirements	Temperature: -10°C-45°C Storage temperature: -30°C-65°C Humidity: 10-80% no dew Power: AC100~240V

Applications:

SOHO or Small and medium businesses



Multiple Site

